

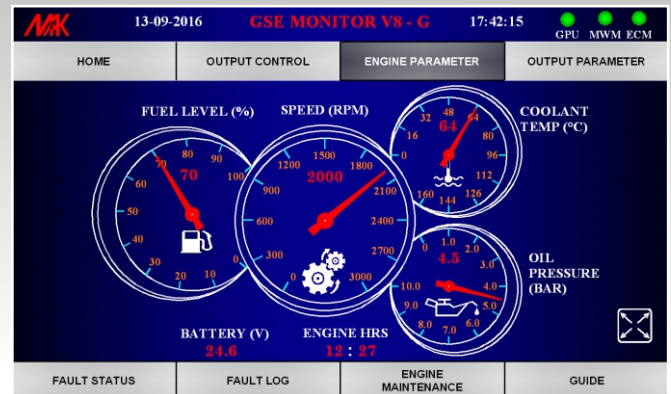
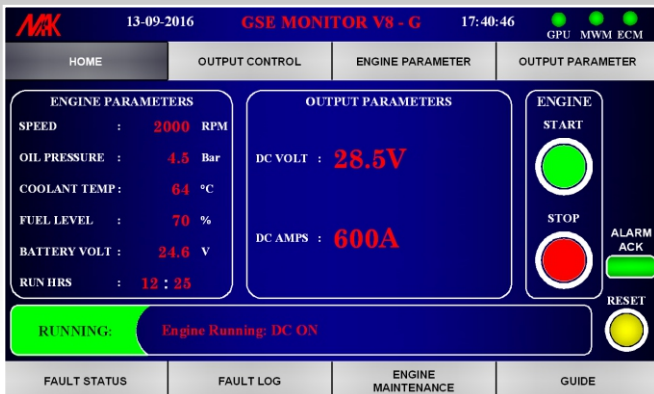


AS 9100
REV. D CERTIFIED
COMPANY

GROUND POWER UNIT

28.5V DC GPU

SMART & FUTURISTIC GSE



MAK CONTROLS & SYSTEMS (P) LTD., INDIA
AIR+MAK INDUSTRIES INC., USA



info@makcontrols.com
info@airmak.com



www.makcontrols.com
www.airmak.com



+91 422 430 5000
+1 662 893 3444

TECHNICAL SPECIFICATION

SUB SYSTEMS

| | |
|------------|--|
| ENGINE | :Cummins/Deutz/Isuzu or equivalent diesel engine Upto Tier 4 Final |
| ALTERNATOR | :MAK brushless 3phase constant low voltage alternator with in-built MAK AVR |
| INSULATION | :Class H |
| RECTIFIER | :12 Pulse Rectifier |

OUTPUT CHARACTERISTICS

| | |
|---------------------------|-----------------------|
| DC OUTPUT VOLT | :28.5V |
| POWER | :11.4kW/17.1kW/22.8kW |
| VOLTAGE REGULATION | :±1% |
| CONTINUOUS CURRENT | :400A/600A/800A |
| AIRCRAFT STARTING CURRENT | :1500A/2000A |
| RIPPLE AMPLITUDE | :<1.5V @ Full Load |

CONTROL PANEL - MAK GSM-V8

Hi-Tech control system with touch screen GUI

SPECIAL FEATURES

Remote Diagnostics and Monitoring System (RDMS)

MONITORING

Following parameters are displayed through GUI touch screen on a graphical format for quick understanding

- Engine lube oil pressure
- Engine coolant temperature
- Engine RPM
- Fuel level
- Engine hours run
- Battery voltage
- Output voltage
- Load current
- Maintenance Schedule

OPERATIONAL PROTECTIONS

A. For Engine

- Low lube oil pressure shutdown
- High coolant temperature shutdown
- Over speed shutdown
- Low fuel warning & shutdown
- Charge fail warning

B. For Output

- Under voltage trip
- Over voltage trip
- Over load trip

ONE STOP DESIGN AND SYSTEM INTEGRATION HOUSE FOR ALL YOUR ENGINEERING NEEDS

MAK CONTROLS & SYSTEMS (P) LTD., INDIA
7/41-B, Avinashi Road, Civil Aerodrome (Post),
Coimbatore-641014, INDIA

AIR+MAK INDUSTRIES INC., USA
11154, Wildwood Drive, Olive Branch,
MS - 38654, USA



+91 422 4305000



+91 422 4305060



info@makcontrols.com



+1 662 893 3444



info@airmak.com

www.makcontrols.com



www.airmak.com